

PRODUCT DATASHEET

DL IP44 FRAME DN 190 WT

DOWNLIGHT IP44 FRAME | Surface mounting frame for Downlight IP44



Areas of application

- Direct replacement for luminaires with compact fluorescent lamps
- General illumination
- Public areas
- Stairways
- Corridors
- Shops
- Bathrooms

Product benefits

- Easily installed

Product features

- Robust polycarbonate casing
- Mounting accessories included



TECHNICAL DATA**Dimensions & Weight**

Diameter	190 mm
Height	47 mm
Product weight	165.00 g

**Materials & Colors**

Product color	White
Housing color	White
Body material	Polycarbonate (PC)

Application & Mounting

Mounting type	Surface
Mounting location	Ceiling

DOWNLOAD DATA**Documents and certificates**

User instruction



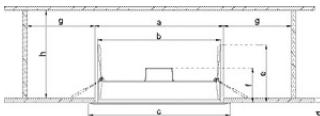
Declarations Of Conformity UKCA

LOGISTICAL DATA

Product code	Packaging unit (Pieces/Unit)	Dimensions (length x width x height)	Gross weight	Volume
4058075709942	Folding box 1	195 mm x 53 mm x 199 mm	226.00 g	2.06 dm ³
4058075709959	Shipping box 10	400 mm x 279 mm x 215 mm	2676.00 g	23.99 dm ³

The mentioned product code describes the smallest quantity unit which can be ordered. One shipping unit can contain one or more single products. When placing an order, for the quantity please enter single or multiples of a shipping unit.

ADDITIONAL CATALOG INFORMATION



Model	a [mm]	b [mm]	c [mm]	d [mm]	e [mm]	f [mm]	g [mm]	h [mm]
DL IP44 DN90	Ø 75	Ø 58	Ø 90	3-25	68	42	-125	-170
DL IP44 DN110	Ø 100	Ø 80	Ø 110	3-25	68	42	-125	-170
DL IP44 DN150	Ø 150	Ø 140	Ø 150	3-25	68	42	-125	-170
DL IP44 DN190	Ø 190	Ø 188	Ø 190	3-25	68	42	-125	-170
DL IP44 DN215	Ø 200	Ø 194	Ø 215	3-25	68	42	-125	-170

DISCLAIMER

Subject to change without notice. Errors and omission excepted. Always make sure to use the most recent release.