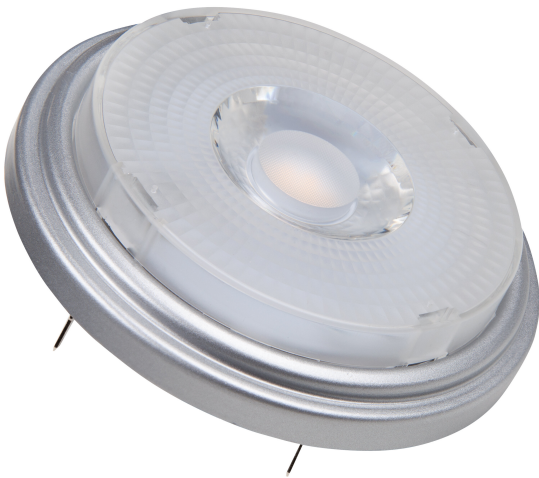


PRODUCT DATASHEET

PPRO AR111 75 40 ° 11.5 W/3000 K G53

PARATHOM® PRO AR111 | Low-voltage LED reflector lamps AR111 with retrofit pin base



Areas of application

- Shops and exhibition rooms
- Domestic applications
- Commercial applications
- Accent lighting
- Outdoor use in suitable outdoor luminaires only

Product benefits

- Quick, simple and safe replacement without rewiring
- Design, dimensions, luminous flux comparable to an incandescent or halogen lamp
- Low maintenance costs thanks to long lifetime
- No UV and near-IR radiation in the light beam
- Stepless dimming
- Very high dimmer compatibility, see also www.ledvance.com/dim
- Compatible with many common conventional and electronic control gears (see also compatibility list)
- Instant 100 % light, no warm-up time

Product features

- LED alternative to low voltage halogen lamps
- High color consistency: ≤ 4 SDCM
- Dimmable
- Base: G53
- Excellent color rendering ($R_a: 97$)



- Lifetime: up to 40,000 h

TECHNICAL DATA

Electrical data

Nominal wattage	11.5 W
Construction wattage	11.50 W
Nominal voltage	12 V
Claimed equiv. conventional lamp power	75 W
Nominal current	1.1 A
Type of current	AC
Inrush current	18 A
Operating frequency	50...60 Hz
Mains frequency	50...60 Hz
Max. lamp no. on circuit break. 10 A (B)	4
Max. lamp no. on circuit break. 16 A (B)	6
Power factor λ	> 0.70

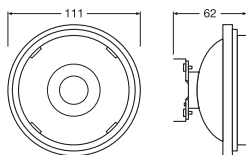
Photometrical data

Luminous intensity	1250 cd
Luminous flux	800 lm
Nominal useful luminous flux 90°	800 lm
Luminous efficacy	69 lm/W
Lumen main.fact.at end of nom.life time	0.70
Light color (designation)	Warm White
Color temperature	3000 K
Color rendering index Ra	97
Light color	930
Standard deviation of color matching	≤ 4 sdcn
Rated peak intensity	1250 cd
Rated LLMF at 6,000 h	0.80

Light technical data

Beam angle	40 °
Warm-up time (60 %)	< 0.10 s
Starting time	< 0.1 s
Rated beam angle (half peak value)	40.00 °

Dimensions & Weight



Overall length	62.00 mm
Diameter	110.7 mm
Maximum diameter	111 mm
Product weight	145.00 g

Temperatures & operating conditions

Ambient temperature range	-20...+40 °C
Maximum temperature at tc test point	83 °C

Lifespan

Lifespan	40000 h
Number of switching cycles	100000
Lumen maintenance at end of serv	0.70
Rated lamp survival factor at 6,000	≥ 0.90

Additional product data

Base (standard designation)	G53
Mercury content	0.0 mg
Mercury-free	Yes
Product remark	All technical parameters apply to the entire lamp / Due to the complex production process for light-emitting diodes, the typical values shown for the technical LED parameters are purely statistical values that do not necessarily match the actual technical parameters of each individual product, which can vary from the typical value

Capabilities

Dimmable	Yes
----------	-----

Certificates & Standards

Energy efficiency class	A 1)
Energy consumption	13.00 kWh/1000h
Type of protection	IP20

Standards	CE / CB / EAC
Photobiological safety group acc. to EN62778	RG1

1) Energy efficiency class (EEC) on a scale of A++ (highest efficiency) to E (lowest efficiency)

Country-specific categorizations

Order reference	LPAR111 7540 11
-----------------	-----------------

Energy labelling regulation data acc EU 2019/2015

Light source cap-type (or other electric interface)	G53
Length	62.00 mm
Height	110.7 mm
Width	110.7 mm

LOGISTICAL DATA

Product code	Packaging unit (Pieces/Unit)	Dimensions (length x width x height)	Gross weight	Volume
4058075448865	Folding box 1	113 mm x 66 mm x 113 mm	176.00 g	0.84 dm ³
4058075448872	Shipping box 6	238 mm x 208 mm x 123 mm	1221.00 g	6.09 dm ³

The mentioned product code describes the smallest quantity unit which can be ordered. One shipping unit can contain one or more single products. When placing an order, for the quantity please enter single or multiples of a shipping unit.

References / Links

- For dimming conformity see www.ledvance.com/dim
- For Guarantee see www.ledvance.com/guarantee
- For further products and actual information concerning LED lamps see www.ledvance.com/ledlamps
- Further information see www.ledvance.com/low-voltage-ledlamps

DISCLAIMER

Subject to change without notice. Errors and omission excepted. Always make sure to use the most recent release.