

# PRODUCT DATASHEET

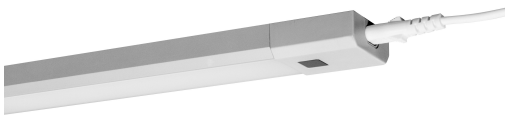
## Linear LED Slim 500mm + RC

Linear LED Slim RGBW | High voltage undercabinet luminaires with RGBW technology

---

### Areas of application

- Shelf and undercabinet lighting



---

### Product benefits

- Direct connection to AC power supply thanks to integrated control gear
- Slim and sleek design
- Homogenous light distribution
- Easy and fast mounting on nearly every surface (adhesive tape or screws)

---

### Product features

- Luminous flux: up to 350 lm
- Switch on and off, color changing and dimming via remote control
- Material: aluminum
- Color: silver
- Available in two lengths: 30 cm and 50 cm
- Connection of up to 10 luminaires (30 cm version) and up to 5 luminaires (50 cm version) possible



## TECHNICAL DATA

### Electrical data

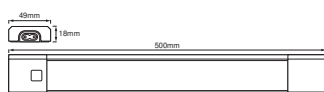
Nominal wattage	6.00 W
Nominal voltage	220...240 V
Mains frequency	50...60 Hz
Nominal current	70.000 mA
Max. no. of lum. on circuit break. B16 A	-
Max. no. of lum. on circuit break. C10 A	-
Max. no. of lum. on circuit break. C16 A	-
Power factor $\lambda$	> 0.5
Protection class	II
Operating mode	Integrated LED driver

### Photometrical data

Luminous flux	350 lm
Total luminous flux of contained light sources	530 lm
Luminous efficacy	58 lm/W
Color temperature	3000 K
Light color (designation)	Warm White
Color rendering index Ra	$\geq 80$
Standard deviation of color matching	$\leq 6$ sdcm
Photobiological safety group acc. to EN62778	RG1
Photobiological safety group acc. to EN62471	RG0
Beam angle	110 °

### Dimensions & Weight

Length	500.00 mm
Width	49.00 mm
Height	18.00 mm
Product weight	430.00 g
Cable length	1500 mm



## Materials & Colors

Product color	Gray
Housing color	Gray
Body material	Aluminum Polycarbonate (PC)
Cover material	Polycarbonate (PC)
Mercury content	0.0 mg

## Application & Mounting

Ambient temperature range	-20...+40 °C
Temperature range at storage	-30...+70 °C
Type of connection	Plug type C (EU)
Type of protection	IP20
Protection class IK (shock resistance)	IK03
Dimmable	Yes
Type of dimming	PIR STEP
Mounting type	Surface
Mounting location	Cabinet undersides
Application environment	Indoor
LED module replaceable	Not replaceable
With light source	Yes

## Lifespan

Lifespan L70/B50 at 25 °C	30000 h
Number of switching cycles	100000

## Emergency lighting

Nominal voltage of battery	3 V
----------------------------	-----

## Certificates & Standards

Standards	CE / EAC
Luminaire with limited surface temperature, "D sign"	No

## EQUIPMENT / ACCESSORIES

- External cable (1.5 m) included
- Fixed connector and flexible connecting cable included

---

**DOWNLOAD DATA****Documents and certificates**

User instruction



Declarations Of Conformity CE

---

**LOGISTICAL DATA**

Product code	Packaging unit (Pieces/Unit)	Dimensions (length x width x height)	Gross weight	Volume
4058075227675	Folding box 1	41 mm x 71 mm x 629 mm	489.00 g	1.83 dm <sup>3</sup>
4058075227682	Shipping box 8	645 mm x 303 mm x 98 mm	4951.00 g	19.15 dm <sup>3</sup>

The mentioned product code describes the smallest quantity unit which can be ordered. One shipping unit can contain one or more single products. When placing an order, for the quantity please enter single or multiples of a shipping unit.

---

**DISCLAIMER**

Subject to change without notice. Errors and omission excepted. Always make sure to use the most recent release.